



PRABHA

Infrastructure Pvt. Ltd.



ISO 9001:2015 ISO 14001:2015 OHSAS 18001:2007

www.prabhainfra.in

1 PROFILE

INDEX

SR. NO.	CONTENTS	PAGE NO.
1	About Us	3
2	Chairman's Desk	4
3	Our Core Team	5
4	Our Vision & Mission	6
5	Journey Of PIPL	7
6	Certificates	8
7	Quality Policy Statement	9
8	Health & Safety Policy	10
9	Our Values	11
10	Investment Philosophy	12
11	Portfolio/Services Offered	13
12	Segments	14
13	Completed Projects	15
14	Ongoing Projects	16
16	Electrical Division	17-18
17	Telecom Division	19-21
18	Civil Division	22-24
19	Railway PMC & RE Division	25-26
20	Company Strength	27
21	Why PIPL	28
22	Our Clients	29
23	Value at the Core	30
24	Machinery & Tools	31
25	Contact	32

ABOUT US

PRABHA INFRASTRUCTURE PVT LTD (PIPL)

AN ISO 9001:2015 ISO 14001:2015 AND OHSAS 18001:2007 COMPANY

On 06th April 2003, We started as Prabha Construction with an objective of developing various infrastructure for the nation to strengthen India's position as the premier hub to live and work in and at the same time being a contributor to the nation's growth and strengthen its position on the global map.

On 13th June 2008, It became Prabha Infrastructure Private Limited.

PIPL has focused its activities on a number of key business sectors including Telecom, Power, Civil & Mechanical projects (EPC), Project Management & Consultancy (PMC) Services.

The successful diversification and integration included changing business practices, modifying core competencies of people and implementing market driven investment strategies. Today PIPL is one of the fastest growing infrastructure and service provider company in India.

CHAIRMAN'S DESK



We take pride in being one of the new age engineering and contracting firms in India having achieved a remarkable growth and contributing significantly to the development of India. The company has attained prominence as a leader in the field of construction and engineering through its competence, competitiveness and timely delivery abiding by highest quality and safety standards.

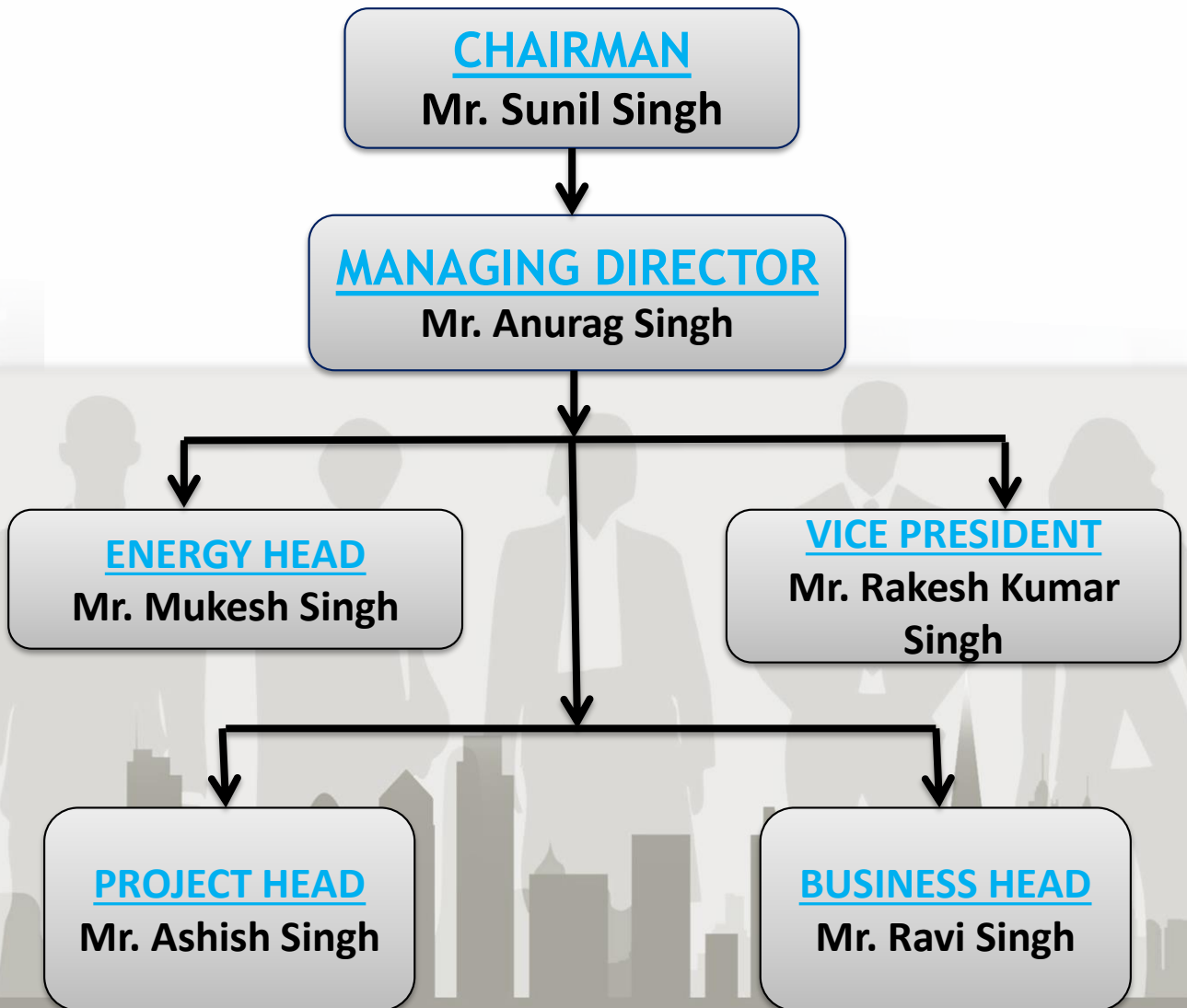
We have a tradition of serving and satisfying our valued customers through efficient management and excellent workmanship, which we continue to maintain with our untiring efforts. We continuously strive for innovation and better performance by keeping in pace with advanced technology. Our aptness to new and better techniques gives us a competitive edge.

Offering services spanning a wide range of engineering fields in Power, Telecom, Civil & Railway projects (EPC), and also offering Project Management & Consultancy (PMC) Services, PIPL is the preferred choice of many clients because of its reliability and commitment to quality and safety.

As we look to the years ahead, we renew our pledge to remain committed to excellence, keep abreast of changes and innovations, adopt better management and construction techniques and successfully overcome all challenges before us.

Sunil Singh

OUR CORE TEAM



OUR VISION & MISSION

VISION

- To be a world class construction and infrastructure enterprise committed to quality, timely completion, customer satisfaction, continuous learning and enhancement of stakeholders value.

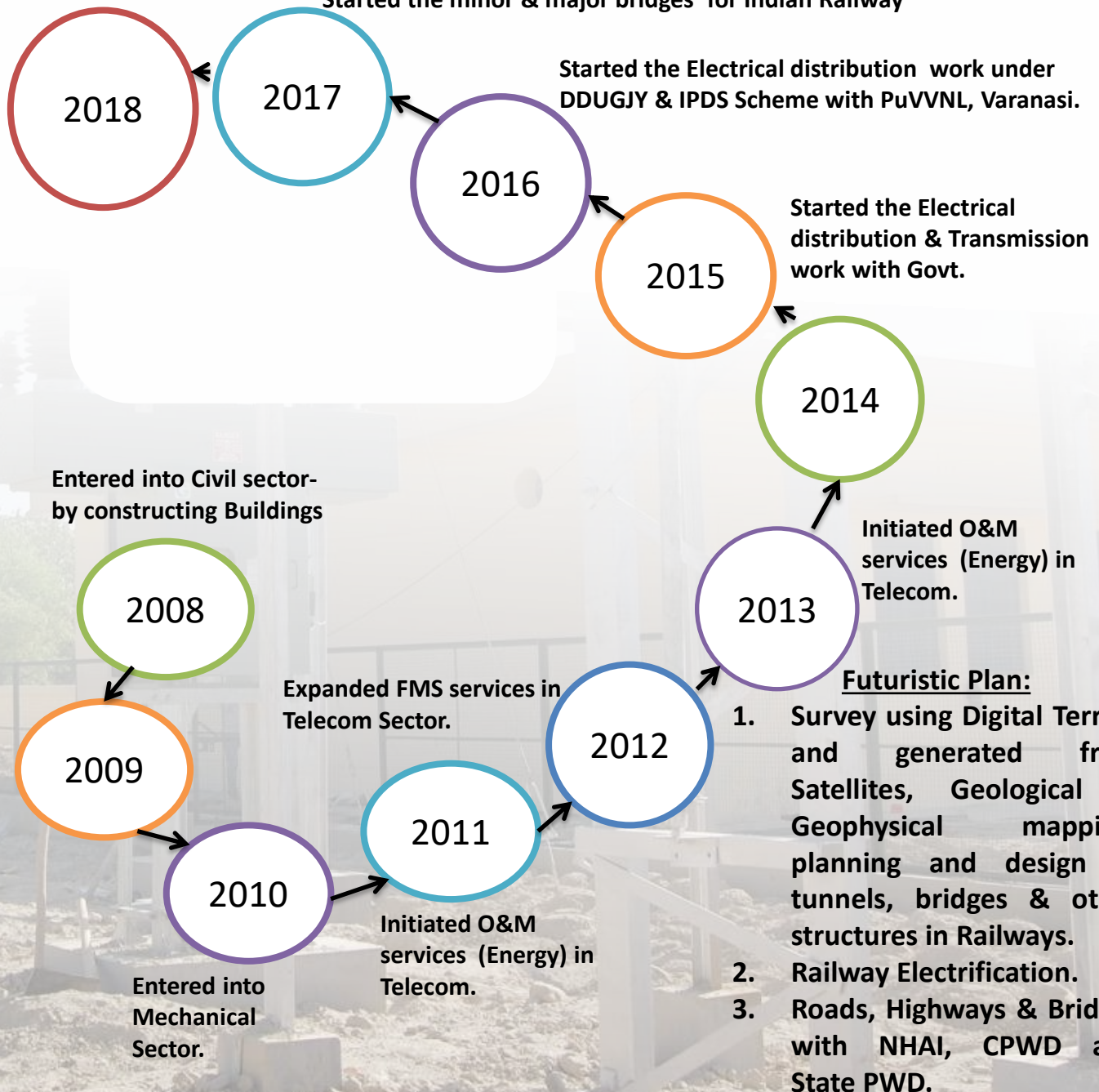
MISSION

- To build a strong future ensuring increased returns to shareholders and enhanced support to associates.
- To adopt latest technologies in the field of engineering, construction, operation & maintenance of infrastructure projects.
- To encourage innovation, professional integrity, up gradation of knowledge & skills of employees and a safe working environment.
- To be a responsible corporate citizen committed to social cause.

JOURNEY OF PIPL

Prabha Infrastructure (P) Ltd started as Turkey Solution Provider (TSP) in Telecom Sector.

Started the minor & major bridges for Indian Railway



NOT LIMITED TO ALL ABOVE.

CERTIFICATES



QUALITY POLICY STATEMENT



QUALITY POLICY STATEMENT

The management of Prabha Infrastructure Pvt. Ltd. have defined and documented the following commitment with respect to quality.

Every staff member has the responsibility to ensure that the intentions of this policy statement are understood, applied and maintained within their own activity area.

Prabha Infrastructure Pvt Ltd have made a commitment:

- To use the disciplines of ISO 9001 to develop and maintain the processes needed to produce a level of construction and project management of a consistent standard of quality and at competitive cost.
- To foster good relationships with clients by effective communications with clients and encouraging feedback.
- To continually improve the effectiveness of the Integrated Management System.
- To document and measure quality objectives and targets through internal audit and management review.
- To deliver construction services in accordance with the specifications and requirements of our clients.
- That every employee constantly aims to improve the overall quality of Company products and services.

By adopting this philosophy, the clients of Prabha Infrastructure Pvt Ltd will be assured of an excellent standard of completed projects and services in accordance with specifications and contracts.

Management has the ultimate responsibility to maintain the quality policy and shall promote all initiatives to attain and improve quality to:

- Give all personnel adequate information and training to enable all tasks to be undertaken with a consistent standard of quality.
- Ensure that excellent relations between the Company and employees are maintained.



Mr. Anurag Singh
Managing Director
Prabha Infrastructure Pvt. Ltd.

Regd. Office: 18, Raj Rajeshwari Nagar, Gilat Bazar, Varanasi-221002 (U.P.) **Tel:** +0542-2283146
Corporate Office: Vaishali Arcade-UGF-4, 6 Park Road, Lucknow, Near SBI Vikramditya Marg Branch-226001
E-Mail: support@prabhainfra.in **Website:** www.prabhainfra.in

HEALTH & SAFETY POLICY



HEALTH & SAFETY POLICY

Health and Safety are an integral part of our business. The objective of Prabha Infrastructure Pvt Ltd policy is to promote and maintain a health and safe working environment across its construction business.

The Health and Safety Policy clearly elucidates how we manage health and safety in our organization through a set of policies, procedures and systems. Management, engineers and supervisors are responsible for ensuring employees are trained to perform work safely, to identify and abate safety hazards, and to report and investigate mishaps and potential hazards in the workplace.

The Policy covers all employees, visitors, contractors and customers associated with or serviced by Prabha Infrastructure Pvt Ltd, and are implemented by creating awareness using open communication, adoption of a comprehensive Safety Management System and through safety meetings, issue of special bulletins, newsletters etc.

Employees are expected to participate in all phases of our Health & Safety plan and to conduct their daily tasks in a manner consistent with the objectives and regulations. Health and Safety are the responsibilities that must be shared equally and without exception by each individual within the organization.

It is clear that no work, service or activity is so important or urgent that safety can be compromised.



Mr. Anurag Singh
Managing Director
Prabha Infrastructure Pvt. Ltd.

Regd. Office: 18, Raj Rajeshwari Nagar, Gilat Bazar, Varanasi-221002 (U.P.) **Tel:** +0542-2283146
Corporate Office: Vaishali Arcade-UGF-4, 6 Park Road, Lucknow, Near SBI Vikramaditya Marg Branch-226001
E-Mail: support@prabhainfra.in **Website:** www.prabhainfra.in

OUR VALUES

- PIPL aims to further enhance the success of India by actively contributing directly and indirectly to its economic growth.
- PIPL is symbolic of the strong relationship the Company shares with all of its stakeholders. As a customer-oriented company, we are focused on creating a legacy of trust and respect, acting as a responsible corporate entity and as a platform for innovation in Power, Telecom, Civil & Mechanical projects (EPC), Project Management & Consultancy (PMC) Services.
- To offer superior ideas and work style options to enhance the quality of work.
- Achieve the highest levels of customer satisfaction.
- Attain optimum levels of operational efficiency.
- Create a positive work environment for our employees.
- We are innovative, diligent & transparent.

INVESTMENT PHILOSOPHY

- As an engineering project company, PIPL's primary objective is to manage its portfolio with care, discipline and patience. PIPL's investment strategy is focused on delivering compelling returns while protecting and growing the asset value over the long term.
- The long-term view and the balanced diversification of the portfolio allow us to adjust PIPL's commercial risk, ride out market cycles and maximise value through operational improvements over time.
- Our investment approach is value-oriented, focusing on infrastructure sectors (Power, Telecom, Civil, Mechanical & PMC services) that will support the growth of India and further enhance its position as the destination of choice. PIPL targets opportunities for equity investment, mergers and acquisitions as well as active engagement in operating businesses that offer the potential for vertical or horizontal integration and are consistent with our overall strategy of developing transferable knowledge and expertise.

PORTFOLIO & SERVICES

We deliver engineering and project management consultancy services for end to end solutions.

PRE-PROJECT ADVISORY

- Survey and Site investigation
- Power system study
- Environmental and socio-economic impact assessment
- Detailed Feasibility Report (DFR)

DESIGN ENGINEERING

- Geotechnical studies, GIS mapping and survey
- Preparation of detailed engineering design and drawings
- Detailed Project Report (DPR)

PROJECT MANAGEMENT

- Project planning, scheduling and control
- Budgeting and cost control
- Contract administration

THIRD PARTY INDEPENDENT QUALITY INSPECTION

- Appraisal of vendors
- Interim quality inspection
- Final quality inspection

CONSTRUCTION SUPERVISION

- Vendor drawing review
- Engineering Procurement and Material Management
- Performance testing and operation optimization

ENERGY EFFICIENCY

- AT&C loss reduction study
- Energy accounting and auditing
- Technical evaluations of energy saving equipment

SEGMENTS

ELECTRICAL

- Transmission and sub-stations
- Electrical Distribution
- PMC (Project Management & Consultancy) services.

TELECOM

- Site Acquisition
- Operation & Maintenance
- Fuel Management Services
- New Electrification for towers

CIVIL

- Administrative Building & Hostels
- Civil work of Telecom Towers
- Urban Township
- Road construction

RAILWAY PMC & RE

- Design of alignment etc.
- Survey Work
- Geological Mapping etc.
- Geotechnical Investigation etc.
- OHE Work

PROJECTS

COMPLETED PROJECTS

25.45 Cr.

5.95 Cr.

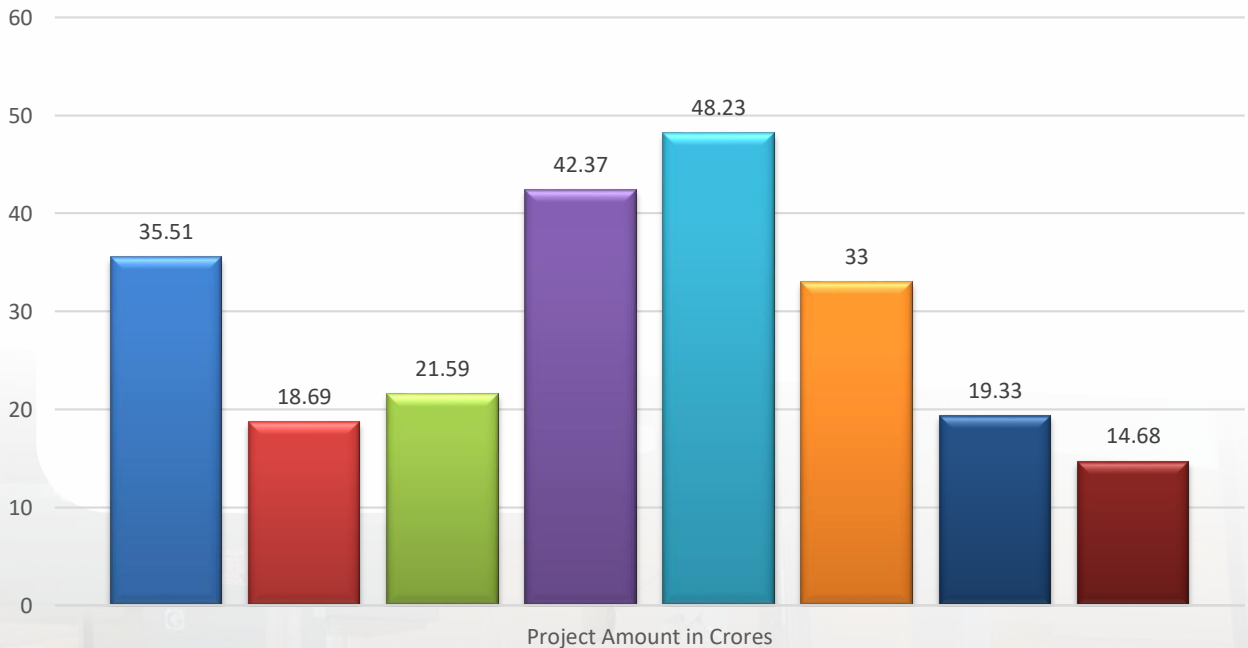
8.54 Cr.

5.8 Cr.

11.79 Cr.

- Construction of 33/11KV Substation along with 33KV & 11KV Line at Ashwaha, Unnao, Uttar Pradesh
- Construction of 33/11KV Substation along with 33KV & 11KV Line at South City (Arjunganj/ Hariharpur), Lucknow
- Construction of 33/11KV Substation along with 33KV & 11KV Line at Kansiram Engg. College, Ambedkar Nagar
- System Improvement, Strengthening and Augmentation Work at Khalilabad Town
- Road Construction 2-Lane from Jalalpur to Mariyahu, Jaunpur, State Highway (UPPWD)

ONGOING PROJECTS



- System Strengthening work of substation & Distribution network & other works under DDUGJY Scheme at Azamgarh, Mau & Ballia District
- Work of System Improvement & Strengthening of Distribution system in Urban area of Azamgarh Zone under IPDS Scheme
- Work of Rural Electrification for Connecting Unconnected RHH in Deoria, Gorakhpur, Maharajganj & Kushinagar Districts
- System Strengthening work of substation & Distribution network & other works under DDUGJY Scheme at Allahabad, Kaushambi, Pratapgarh & Fatehpur District
- Geological Survey and Preparation of DPR (Detailed Project Report) of Railway Line with tunnels (Bhalupung to Tawang)
- Turnkey Service Provider(TSP) of Telecom towers
- Design,Supply,Erection,Testing &Commissioning of 25kv,50HZ,Single Phase,AC,Electrification including OHE Works, Jaipur
- Road Construction 2-Lane from Azamgarh to Bilariyaganj, Azamgarh

ELECTRICAL

- Indian Power Supply need to grow at approximately 12% annually to keep pace with GDP growth rate of 8% per annum
- Central Government has introduced schemes which include “Accelerated Power Development and Reform Programme” (APDRP) for improving transmission and distribution network across states.
- Recently Central Government has launched two more schemes which include “Integrated Power Development Scheme (IPDS)” and “Deen Dayal Gram Jyoti Yojana (DDUGJY)” to **extend financial assistance** against capital expenditure to supplement the efforts of DISCOMs/ Power Departments in strengthening and augmenting distribution infrastructure in Urban & Rural Areas.
- Design, Engineering, Supply, erection, testing and commissioning of EHV & HV substations.
- Distribution Substation.
- PMC (Project Management & Consultancy Services).
- Design, Engineering, Supply, erection, testing and commissioning of EHV & HV Overhead & Underground Lines.
- Distribution Lines.
- Underground Cabling.
- HV & LV Capacitor Bank.
- PMC (Project Management & Consultancy Services).

Design, Engineering, Supply, Erection, Testing & Commissioning of

- 220 & 132 KV Sub Station.
- Transmission Line.
- 33/11 KV Sub Station.
- 33 & 11 KV Overhead Line.
- EHV, HV & LV Underground Cabling.
- Electrical Distribution.

ELECTRICAL



TELECOM

We at PIPL focus more on O&M of cell sites, AMC of class 'A' materials. We **Take care of refuelling the generators, EB bills collection, Prevention, Breakdown and Corrective Maintenance. We also ensure that the rental reaches the owner on time.**

Our services include Estate Management, Security Management, Fuel Management, Fault Management and much more. As an Operation & Maintenance Service provider, we **endeavour to provide flexible, integrated, dependable, qualitative and responsive** solutions to cater the needs of our clients in the telecom industry. We believe that **Our customer's commitment is our commitment, They commit and we perform.** We do not leave a stone unturned in fulfilling their requirements. Our services are not only cost effective but are also in line with the customer's **expectations and satisfaction level. Our team is project specific and is well trained with the specific skills required for the Operation & Maintenance in the Telecom Industry.**

- Fuel Management Services Job in 6 districts for Indus Towers Ltd.
- Turn Key Service Provider (TSP) – completed 100+ Sites.
- Installation & Commissioning of various passive infra equipment used at telecom sites i.e. SPS, Servo, AC, DG, PIU, SMPS, BB etc.
- E.B. Maintenance & New Lines.
- Acquisition of Site.
- Operation & Maintenance of Cell sites for Indus Towers Ltd.
- I & C of various active infra equipment like BTS, Transmission mugs, routers, IDU, ODU, Microwave antennae, GSM antennae, BSC, MSS, MGW, HSS, etc.
- Software up-gradation of various active & passive infra equipment.

PROJECTS

ONGOING PROJECTS-TELECOM

- Operation & Maintenance with Indus Towers Ltd in 6 districts i.e. Azamgarh, Ghazipur, Bhadohi, Chandauli, Mirzapur & Sonebhadra.
- Telecom Infra Projects With Indus Towers Ltd: Installation, Testing & Commissioning of DG sets, IPMS, PP etc.
- TSS & TSP work with Indus Towers Ltd in UPE.

TELECOM

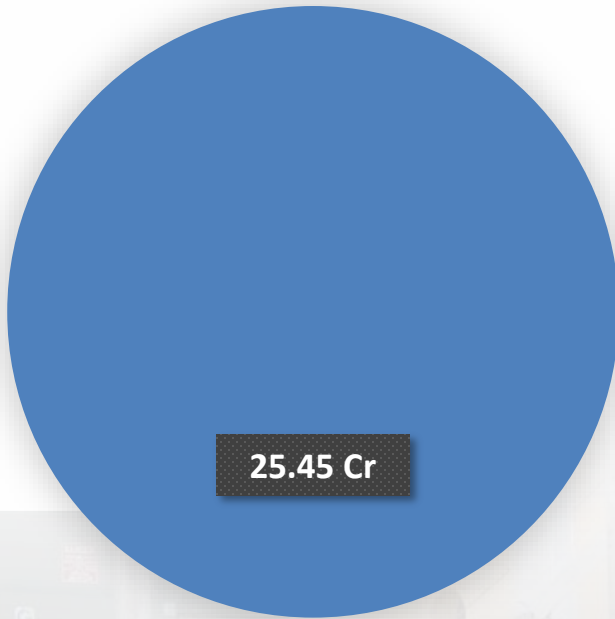


CIVIL

- Construction spending for Urban infrastructure expected to amount to Rs. 267 bn(US\$ 5.8 bn) in Eleventh Five Year Plan.
- Key drivers include growing Indian industry & economy, increasing urbanization and household growth.
- Completed 300+ TSP Sites For Die rent service providers across the country.
- e.g. Xcell, Hutchison, WTTIL, Vodafone, Indus Towers etc.
- Built more than 2,56,000 Sqft area Hostel, Administrative & academic building.
- Urban Township.
- Road Constructions.
- Doubling Railway Line:
 - Earth Excavation Work.
 - Construction of Minor bridges.

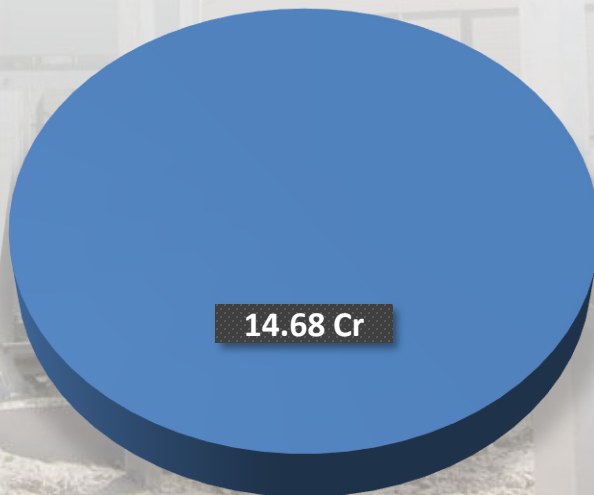
PROJECTS

COMPLETED PROJECTS



- Road Construction 2-Lane from Jalalpur to Mariyahu, Jaunpur, State Highway (UPPWD)

ONGOING PROJECTS



- Road Construction 2-Lane from Azamgarh to Bilariyaganj, Azamgarh, State Highway (UPPWD)
- 95% Completed

CIVIL



RAILWAY PMC & RE

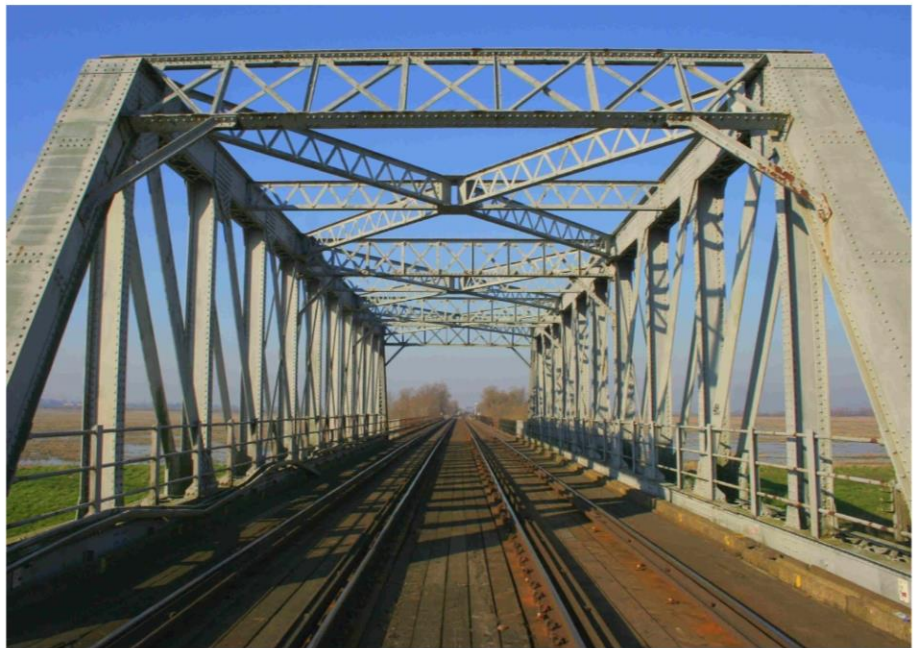
Project Management Consultancy (PMC) Services on Indian Railways has been under consideration of Railway Board for quite some time. In order to improve the quality of supervision and also to expedite completion of various railway projects, LASA undertake PMC services in railway sector, all the projects are challenging as they involved working by the side of busy running lines. Work involves modification yards, regrading of tracks, modification of platforms, station buildings, Over head electrical installations, signaling and telecommunications. Modification and interlocking of Level crossings while both railway and road traffic is operating, replacement of mechanical signaling by solid state color light signaling. Coordination with construction contractors, RVNL, Railway authorities (both Divisional & Zonal) State Govt. authorities like State Electricity Boards, District administration, Forest Department, Preparation of application to CRS and conducting his inspection.

Railway engineering is a multi-faceted [engineering](#) discipline dealing with the design, construction and operation of all types of [rail transport](#) systems. It encompasses a wide range of engineering disciplines, including [civil engineering](#), [computer engineering](#), [electrical engineering](#), [mechanical engineering](#), [industrial engineering](#) and [production engineering](#). A great many other engineering sub-disciplines are also called upon.

Following are the main activities –

- Design of alignment etc.
- Survey work etc.
- Geological mapping etc.
- Geotechnical investigation etc.
- Geotechnical investigation etc.
- Design of substructure & superstructure for non-standard spans etc
- OHE Work.

RAILWAYS



COMPANY STRENGTH

- Healthy Cash Flow.
- Sufficient Capital available to grow.
- Hiring Quality staff.
- Project management & resource coordination.
- Strong leadership/staff communication.
- Staff training & New Staff Orientation.
- Company culture is generally open to change.
- Strictly follow the ESH guidelines and other safety values in our organization.
- Effective and strong liaison with local administration to take intervention as and when required.
- Executes large projects in Power, Telecom, Civil & Mechanical Sector and we have efficient team to handle warehousing and material distribution set up, engineering designs, surveys, procurement and execution.

WHY PIPL

- We have a team of experienced and skilled personnel in Telecom, Power, Civil & Mechanical divisions.
- We use advance and innovative techniques in Telecom, Power and enterprise domain to address client's critical business needs.
- Our quality and timely delivery has made us one of the most preferred O&M partner.
- We believe "Our customer's commitment is our commitment" and so we leave no stone unturned in fulfilling those commitments.
- Our unmatched ability to respond and complete the most challenging projects is a result of the highly efficient team of experts, that we possess.
- PIPL follows a strict quality and safety policy thereby becoming one of the most reliable firms to work with.
- We have a strong and efficient Project Management System which make us aware of the challenges well in advance, thereby improving our efficiency

OUR CLIENTS



VALUES AT THE CORE

- UNFLINCHING INTEGRITY
- EFFICIENCY WITH EFFECTIVENESS
- CONTINUOUS INNOVATION & TRAINING
- TEAM WORK & RESPECT FOR ALL INDIVIDUALS
- PROACTIVE APPROACH
- COMPLIANCE TO CUSTOMER STANDARD & EXPECTATIONS
- CONFIDENTIALITY

MACHINERY & EQUIPMENT

PIPL has acquired modern, sophisticated and state-of-the-art construction plant, equipment and machinery , imported as well as indigenous.

At PIPL, technological upgradation and advancement, in coping with contemporary times, is a continuous process.



CONTACT

CORPORATE OFFICE

Plot No. 64,
Ground Floor, Sector-18,
Gurugram – 122015
Haryana (India)

Phone : +91-124-4734220

REGD. OFFICE

18, Raj Rajeshwari Nagar,
Gilat Bazar,
Varanasi-221002

Phone : +91-542-2283146

WEBSITE: www.prabhainfra.in

EMAIL: support@prabhainfra.in